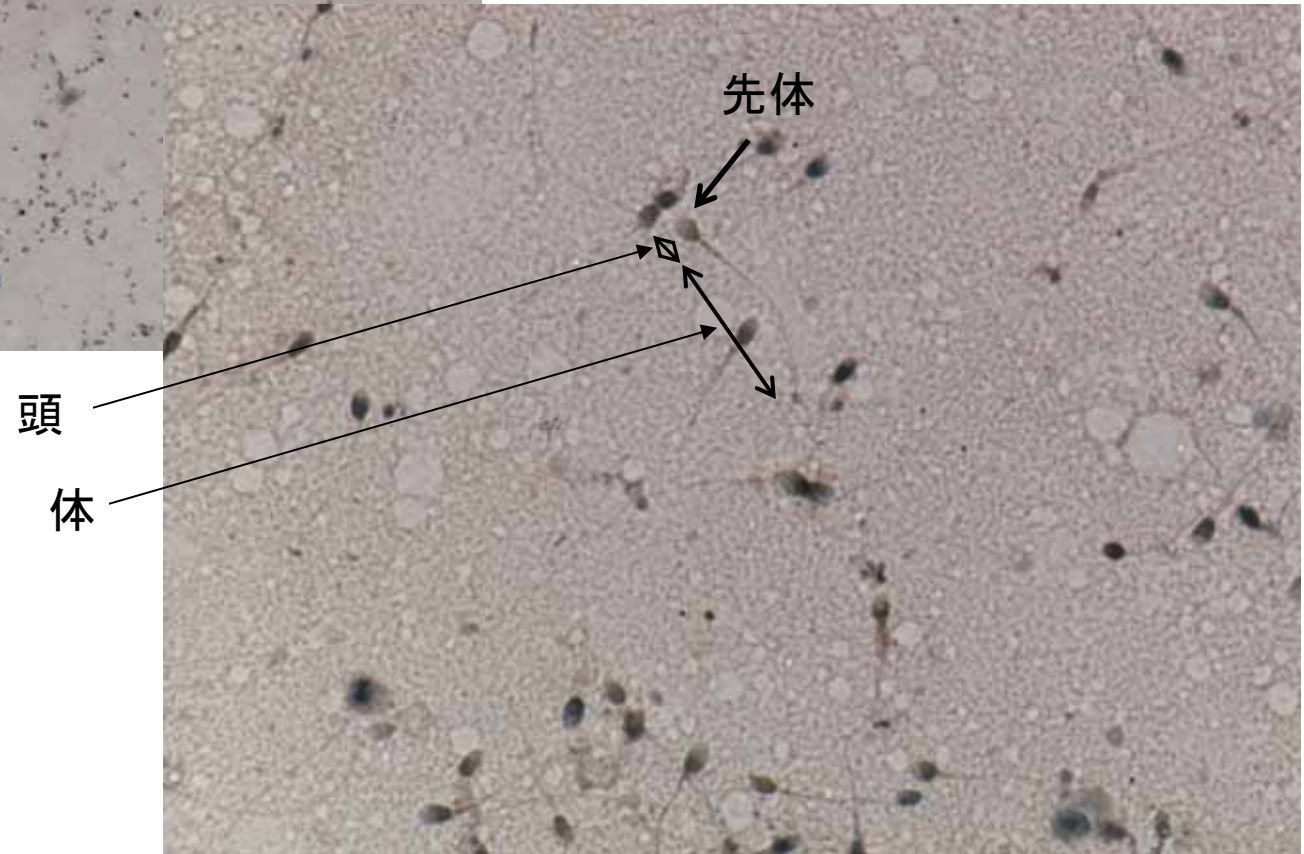


生殖器系

精子 [鉄ヘマトキシリン染色]

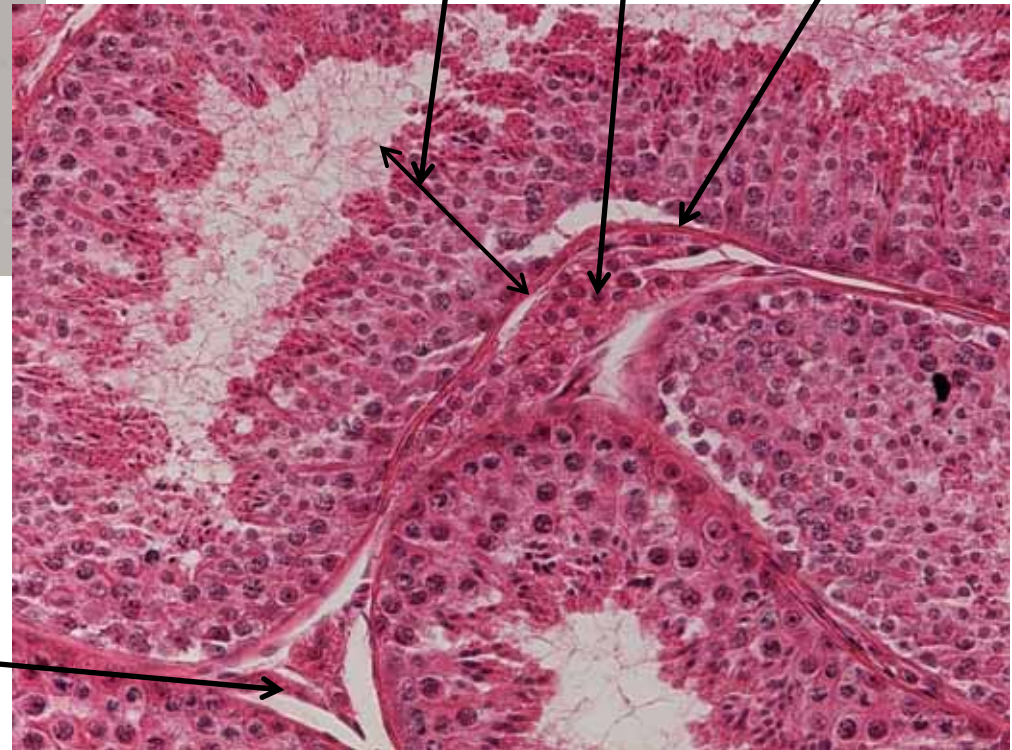


精巣



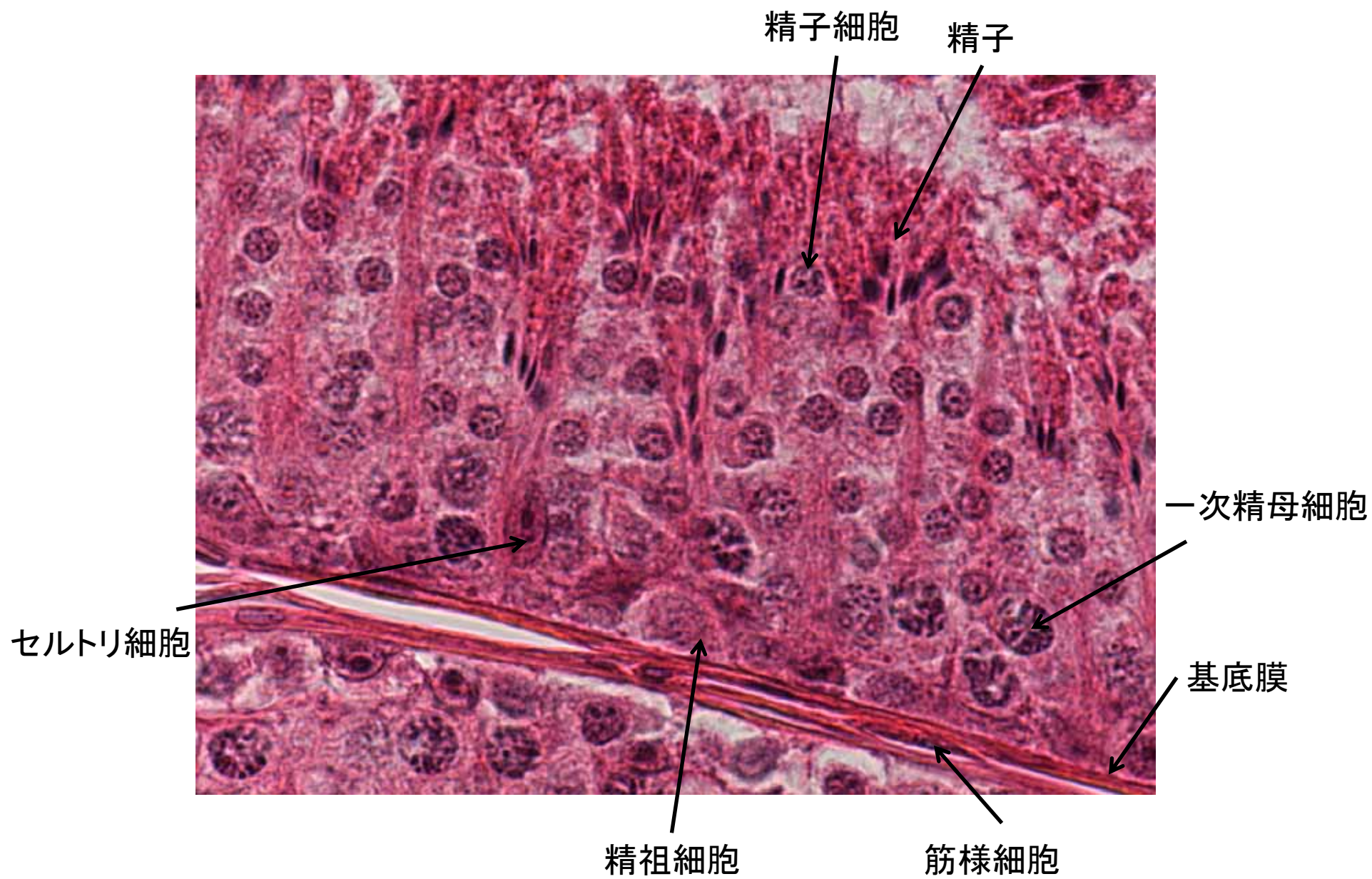
白膜(密性結合組織)

精上皮 間質 基底膜

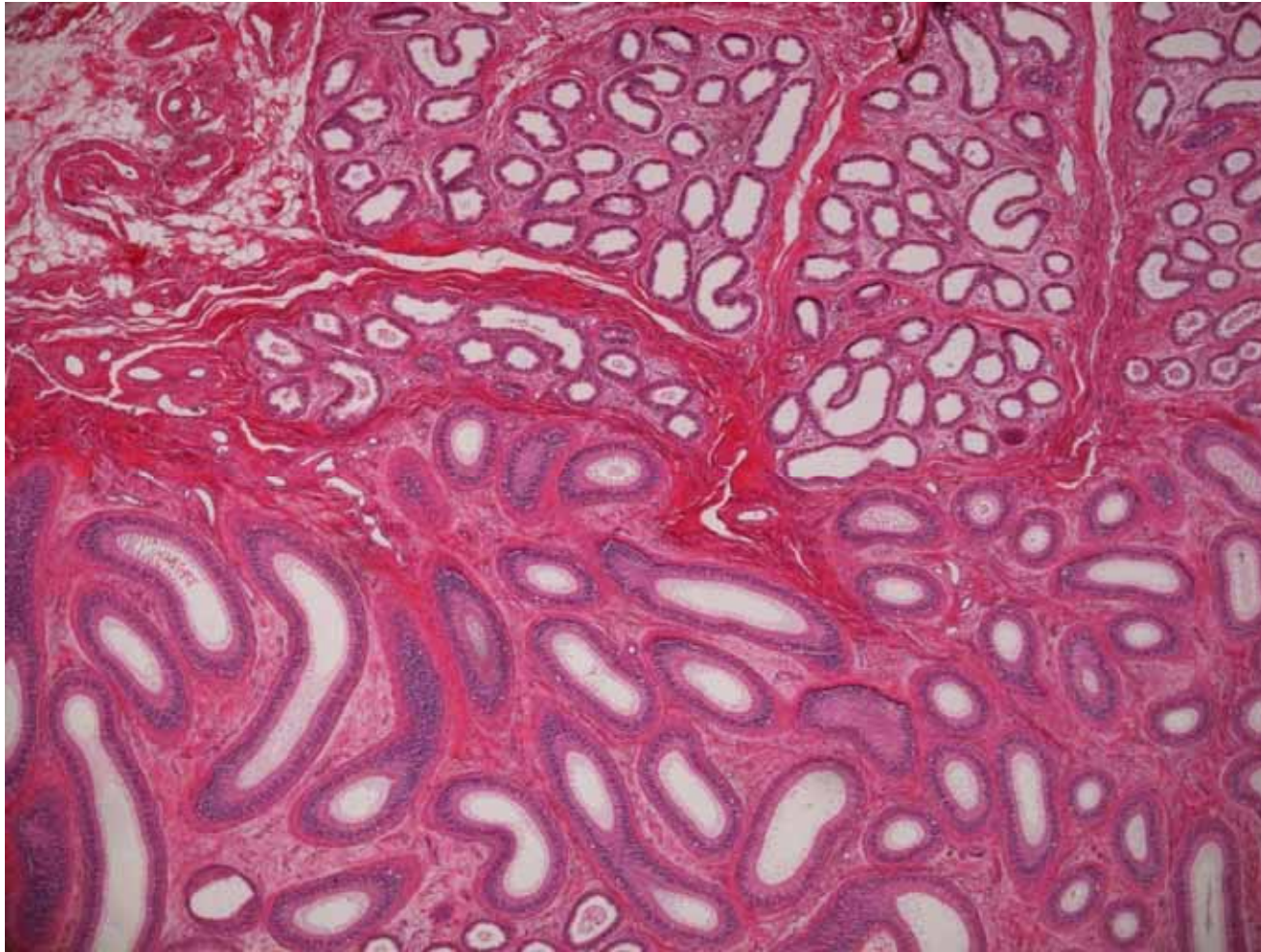


ライディツヒ細胞





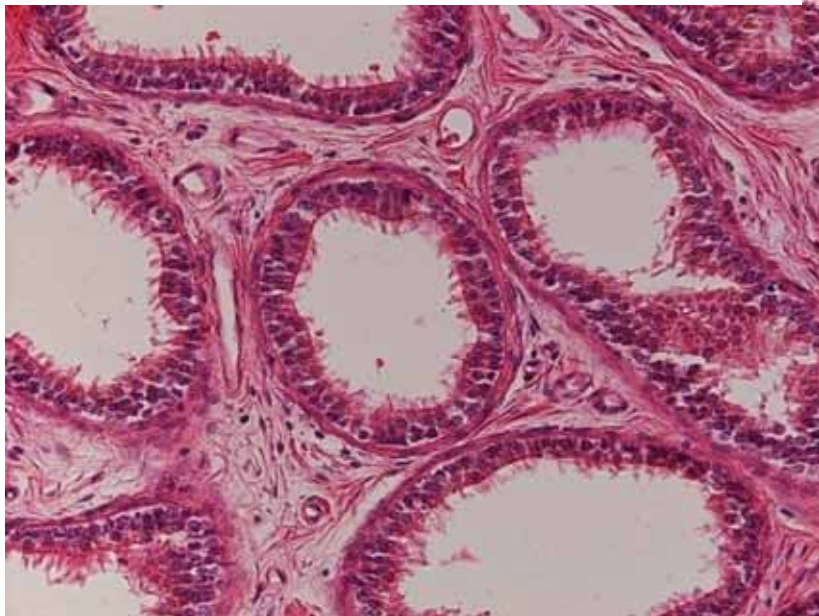
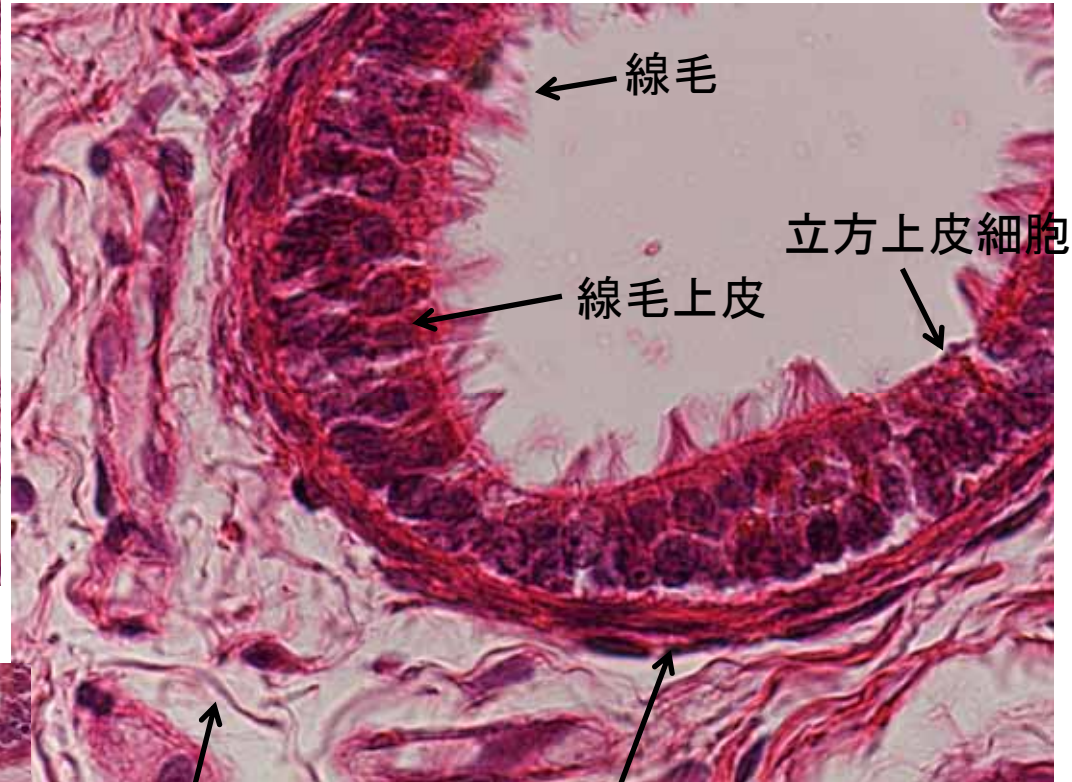
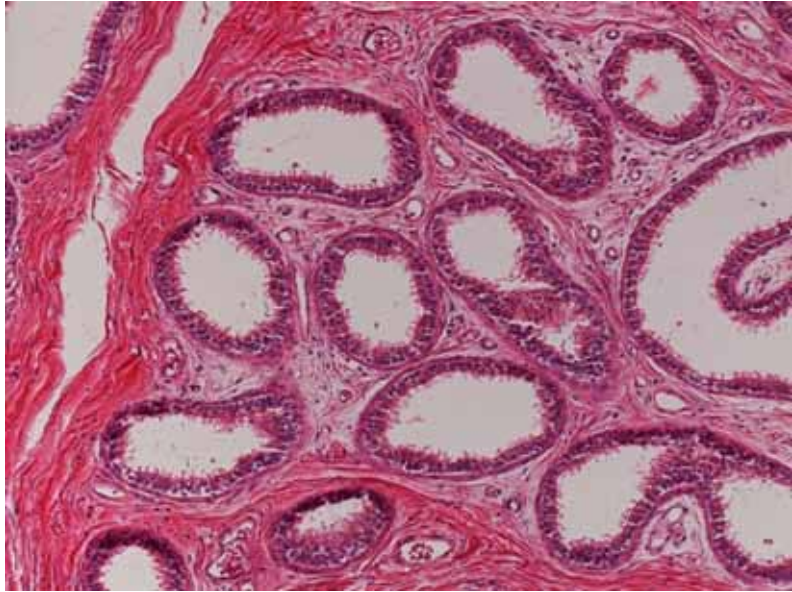
精巢上体（頭部） HE



精巢輸出管

精巢上体管

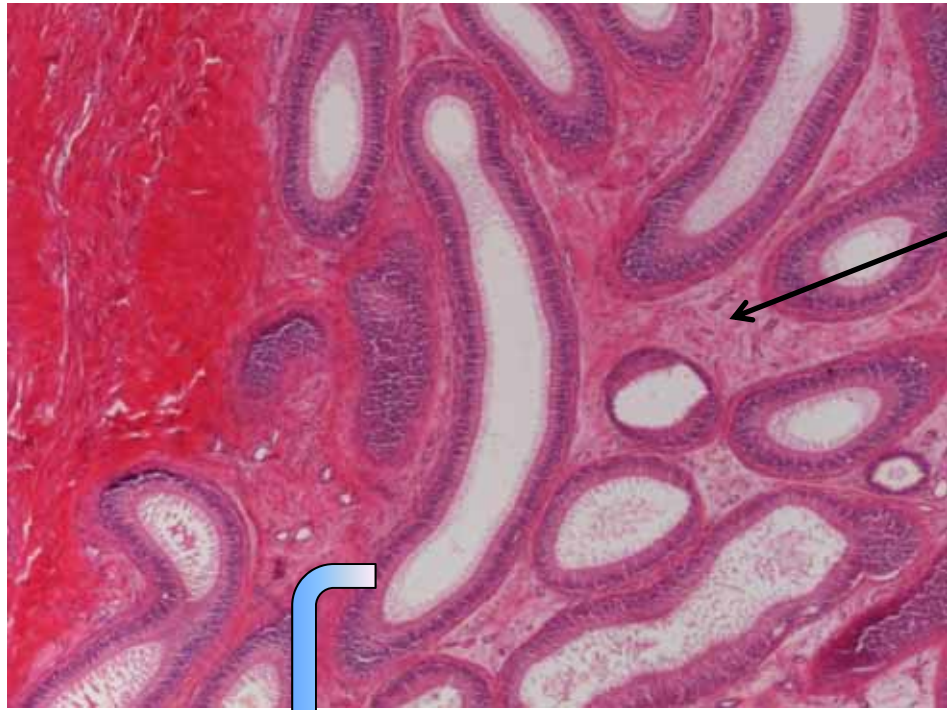
精巢上体・精巢輸出管



疎性結合組織

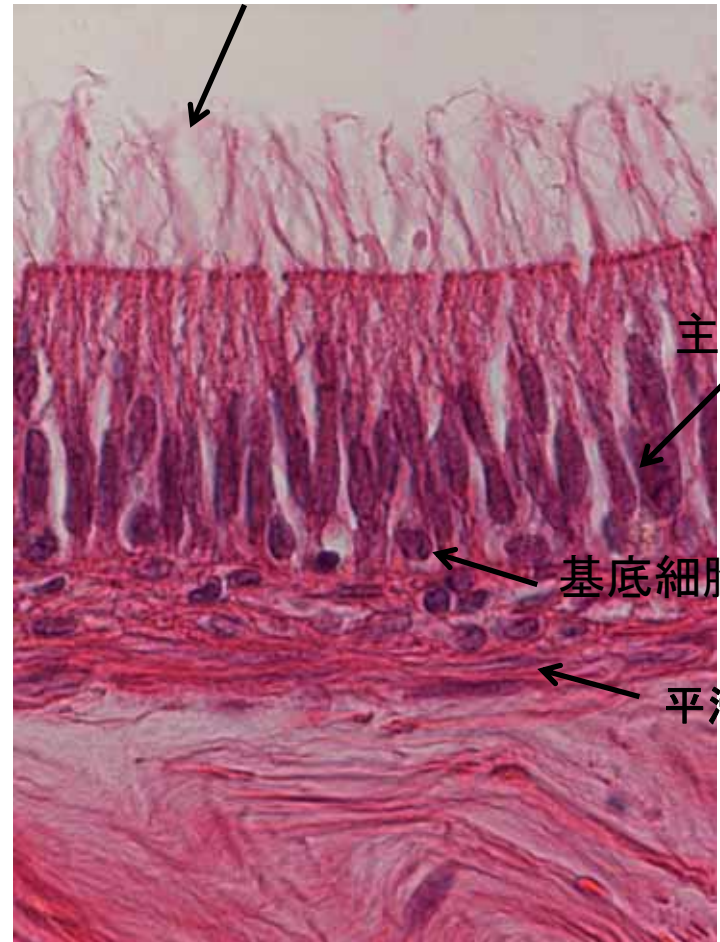
平滑筋

精巢上体・精巢上体管



疎性結合組織

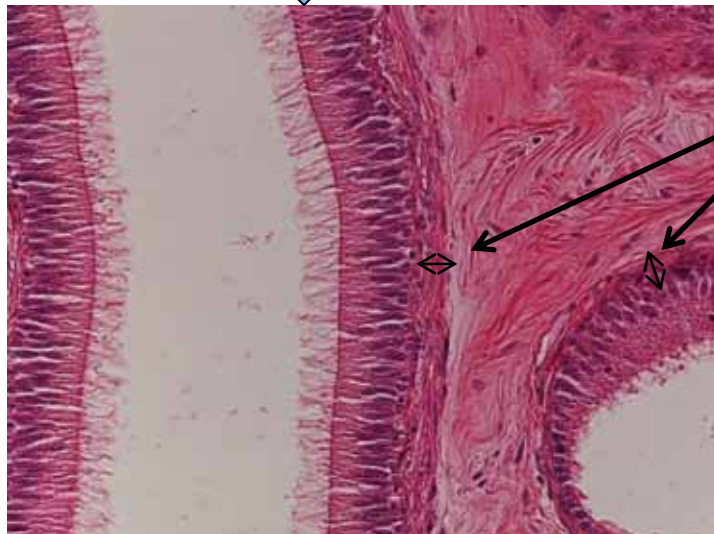
不動毛



主細胞

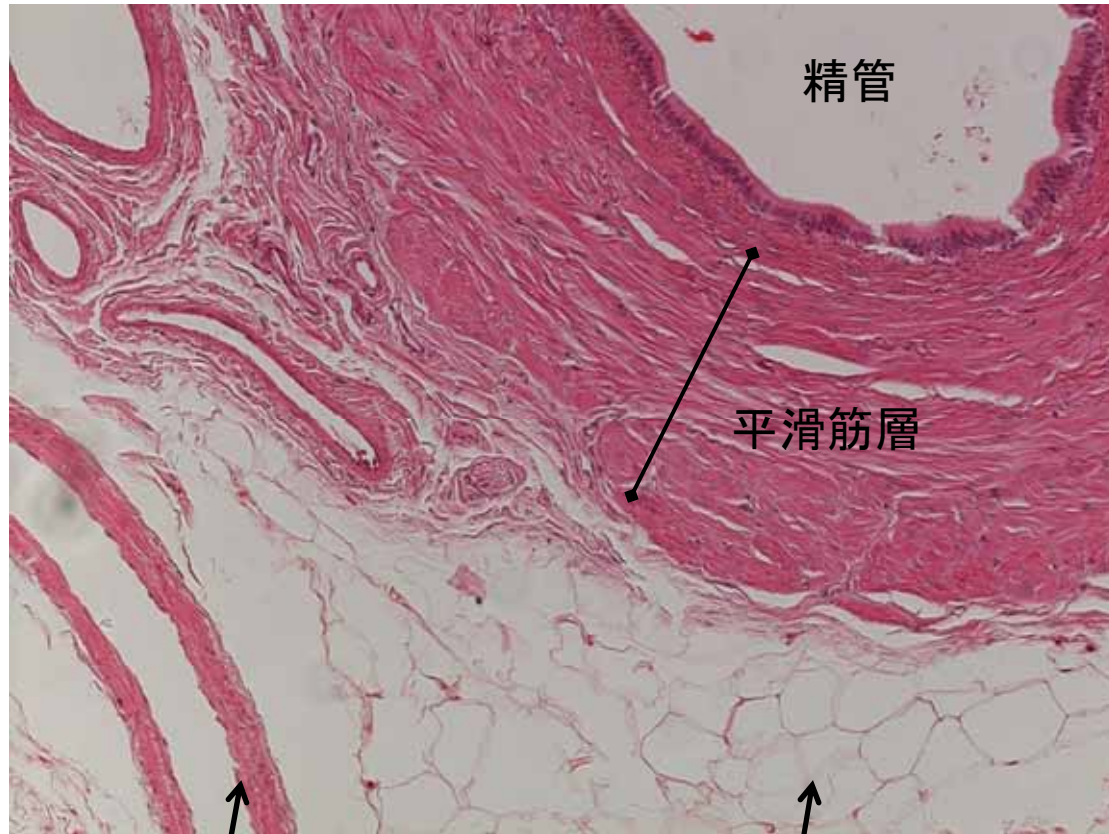
基底細胞

平滑筋



平滑筋

精 索

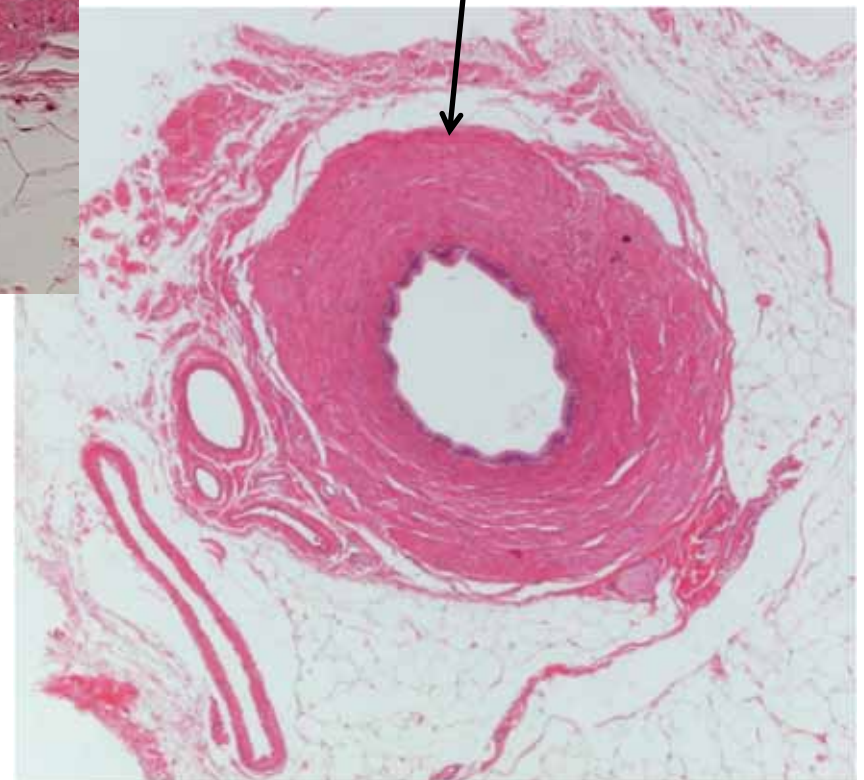


精管

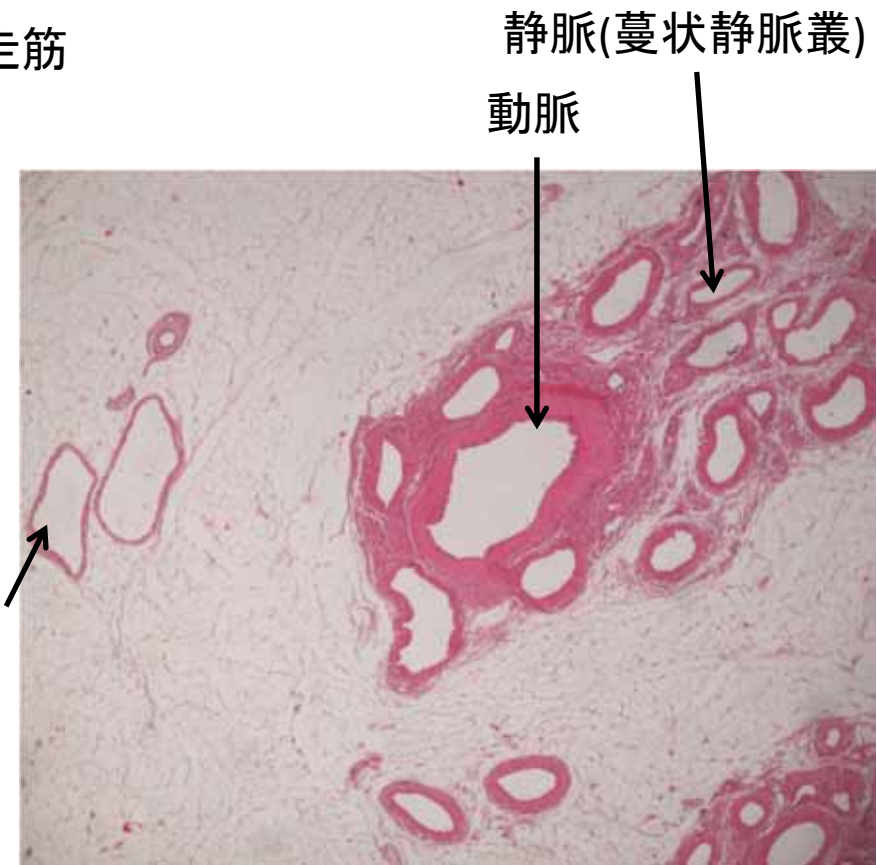
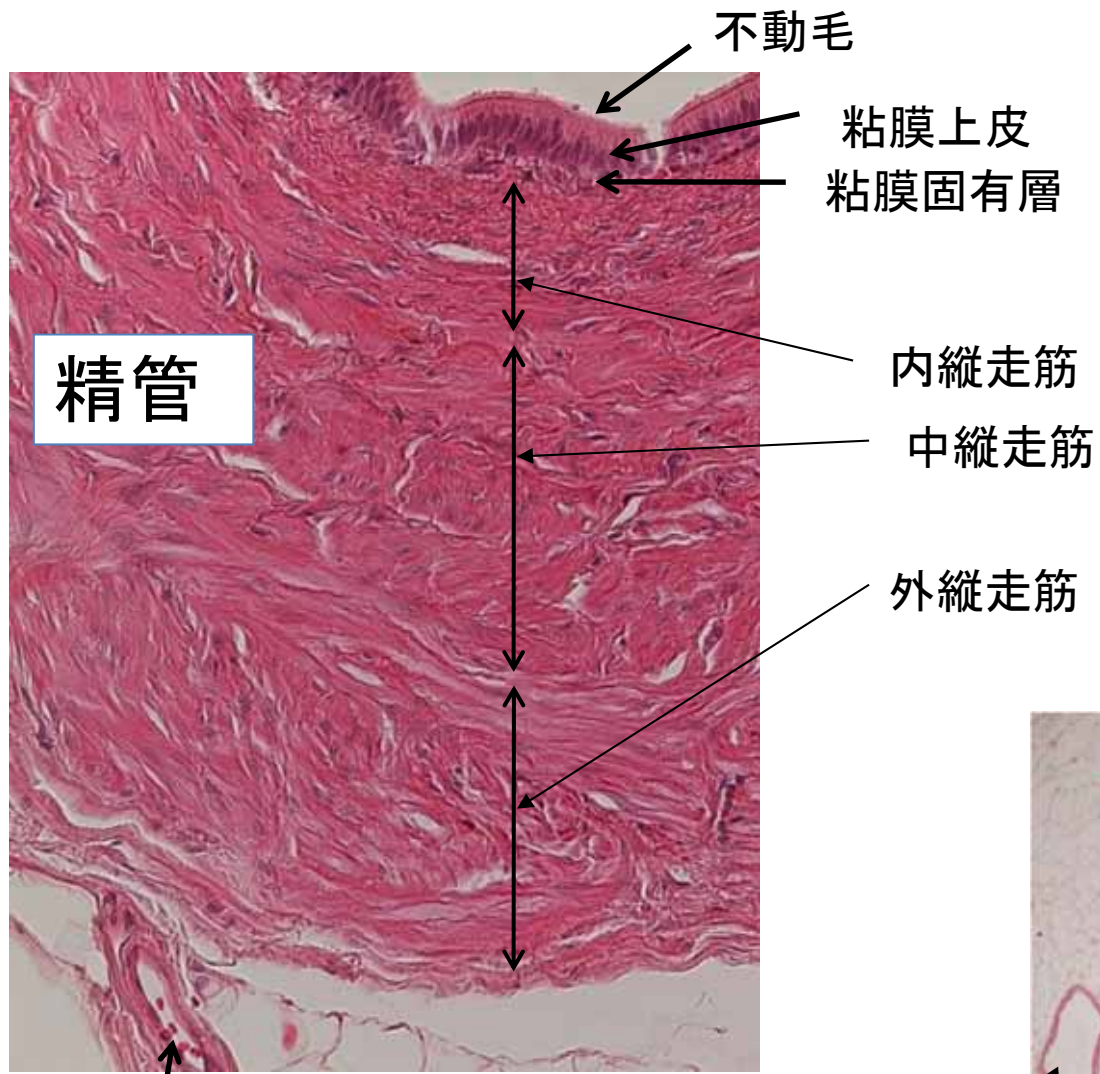
平滑筋層

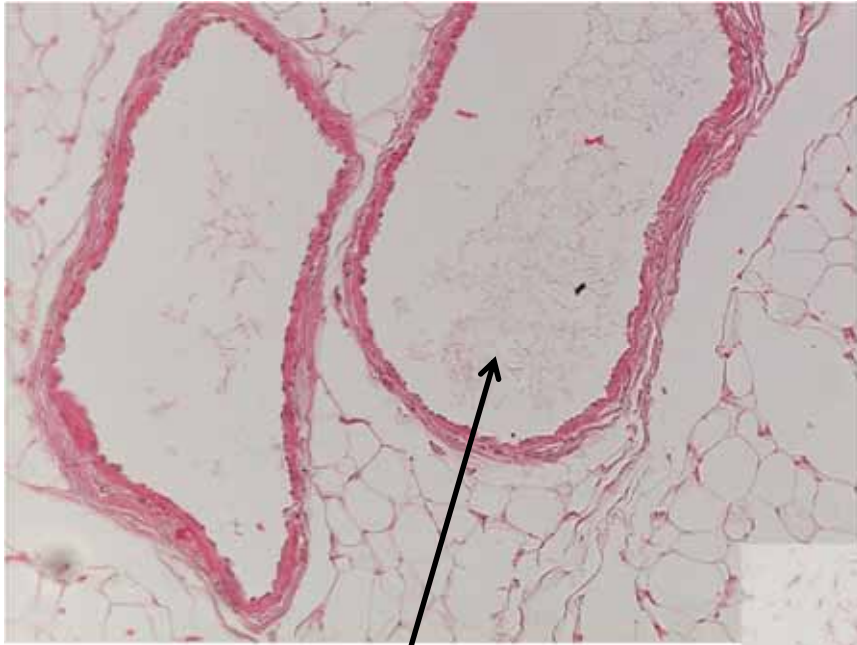
靜脈

脂肪細胞



精管

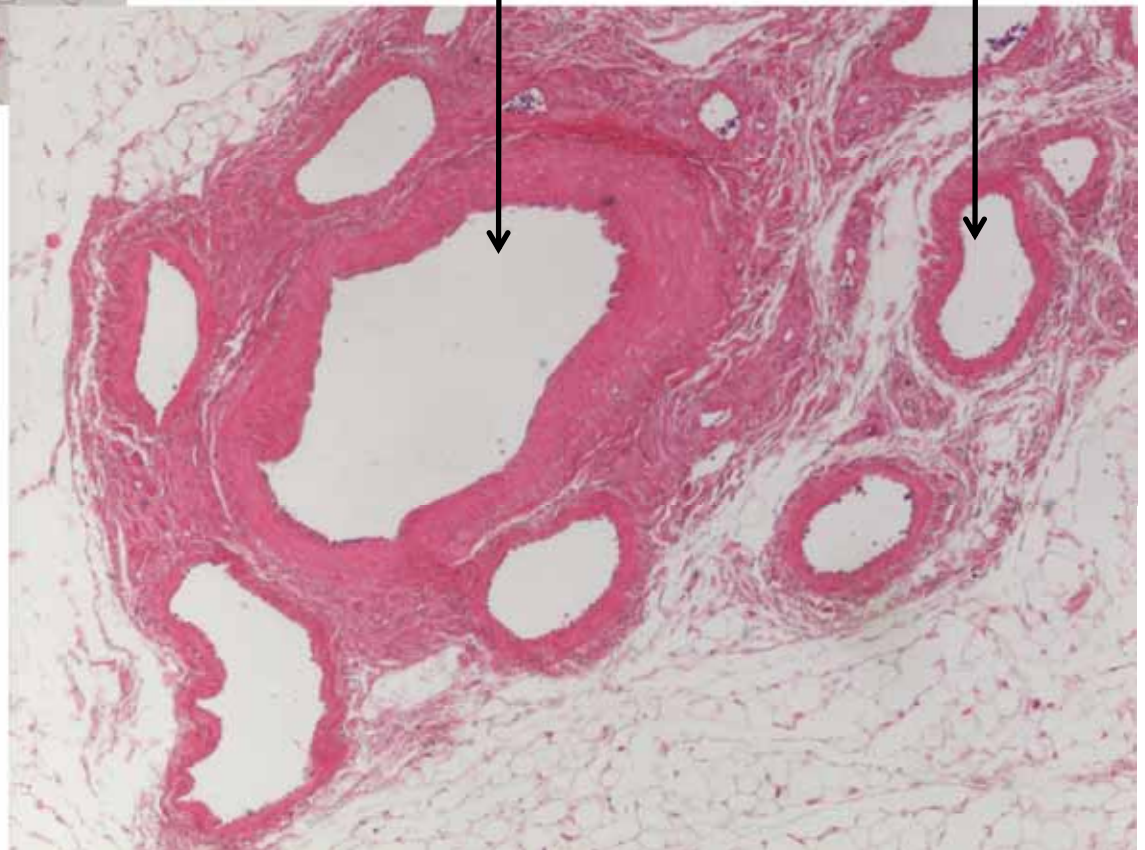




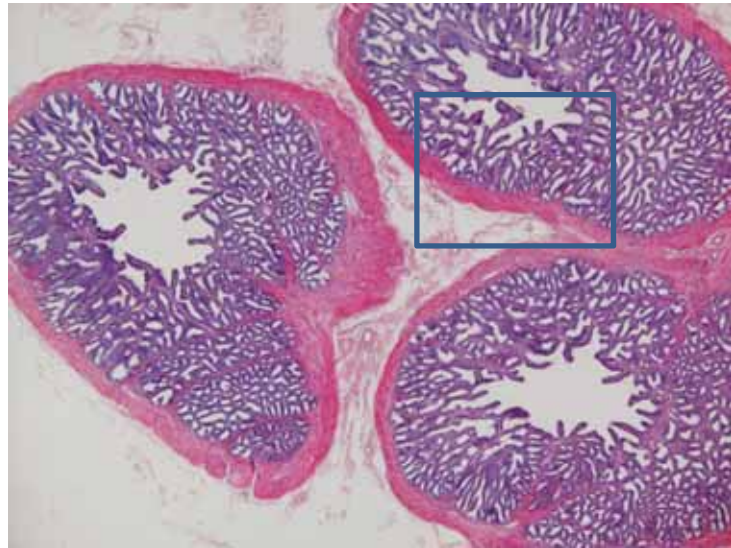
リンパ管

精巣動脈

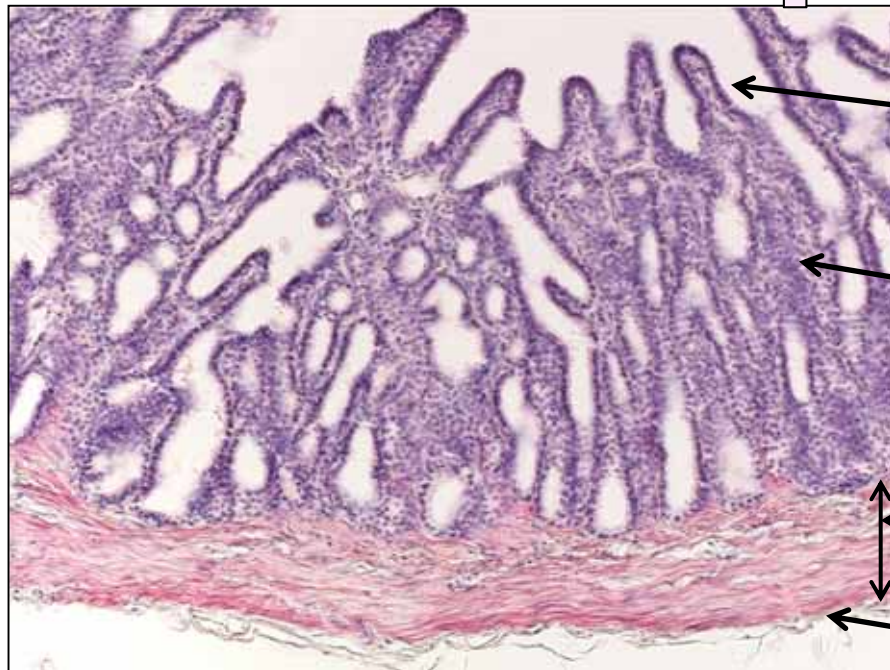
静脈(蔓状静脈叢)



精 囊



粘膜上皮（単層～2列立方）



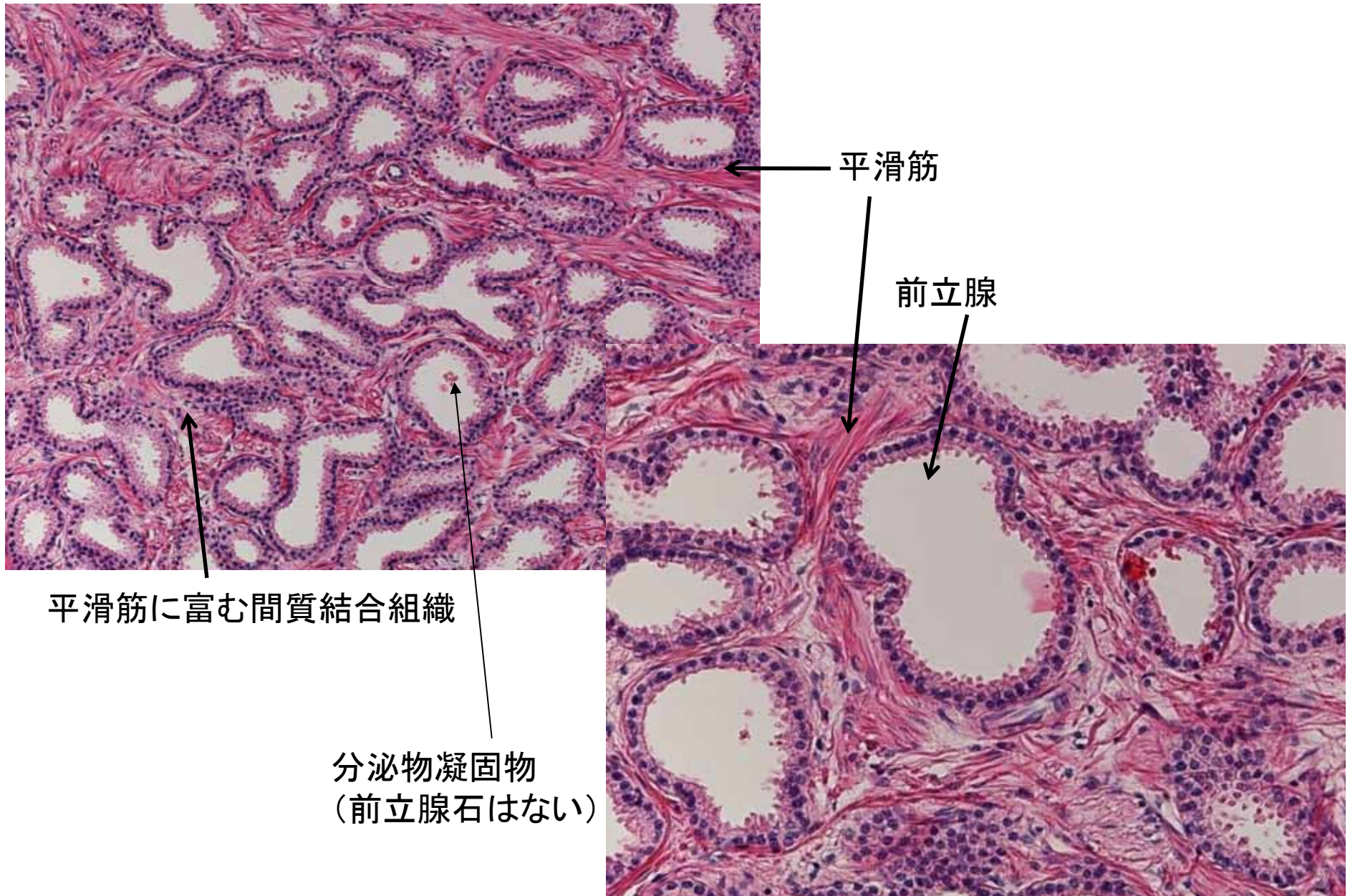
粘膜ヒダ

粘膜固有層

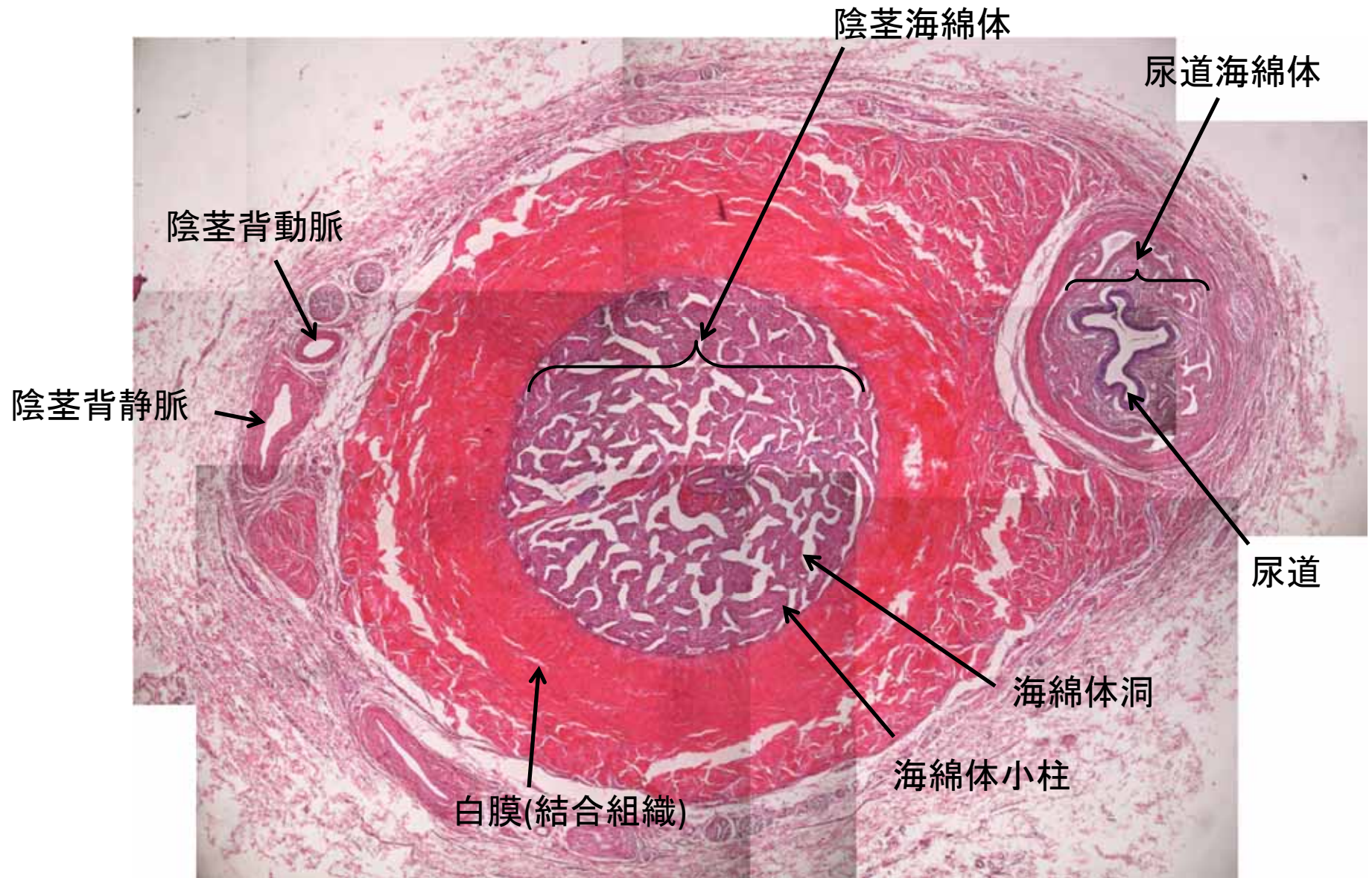
筋層

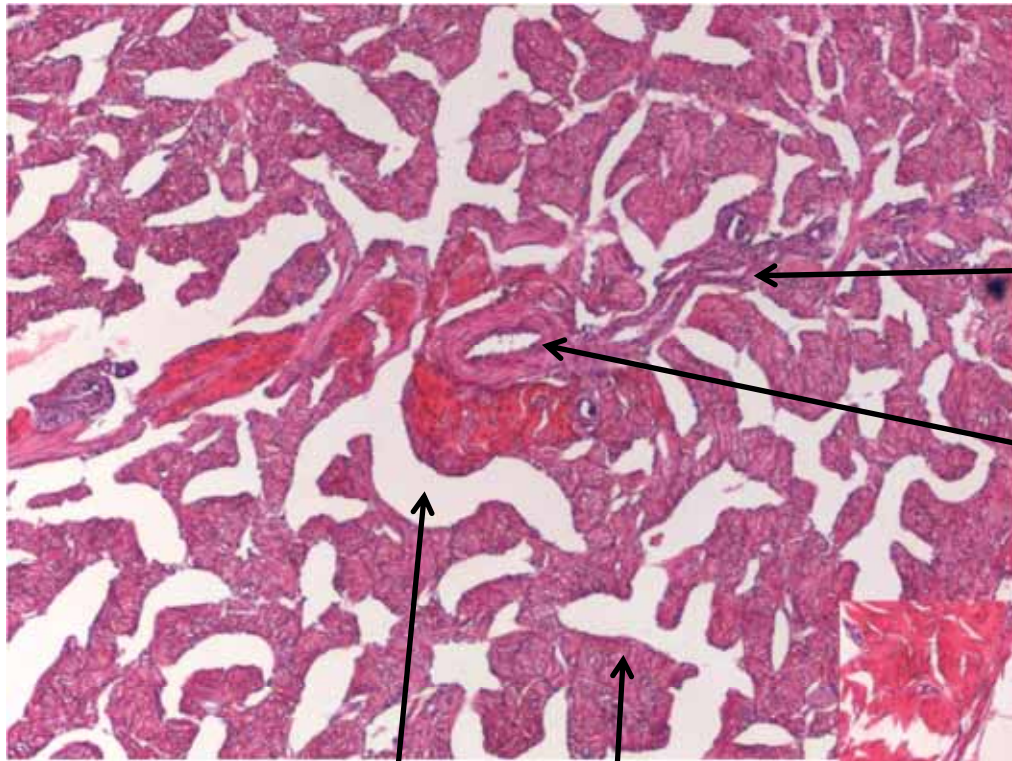
外膜

前立腺



陰莖



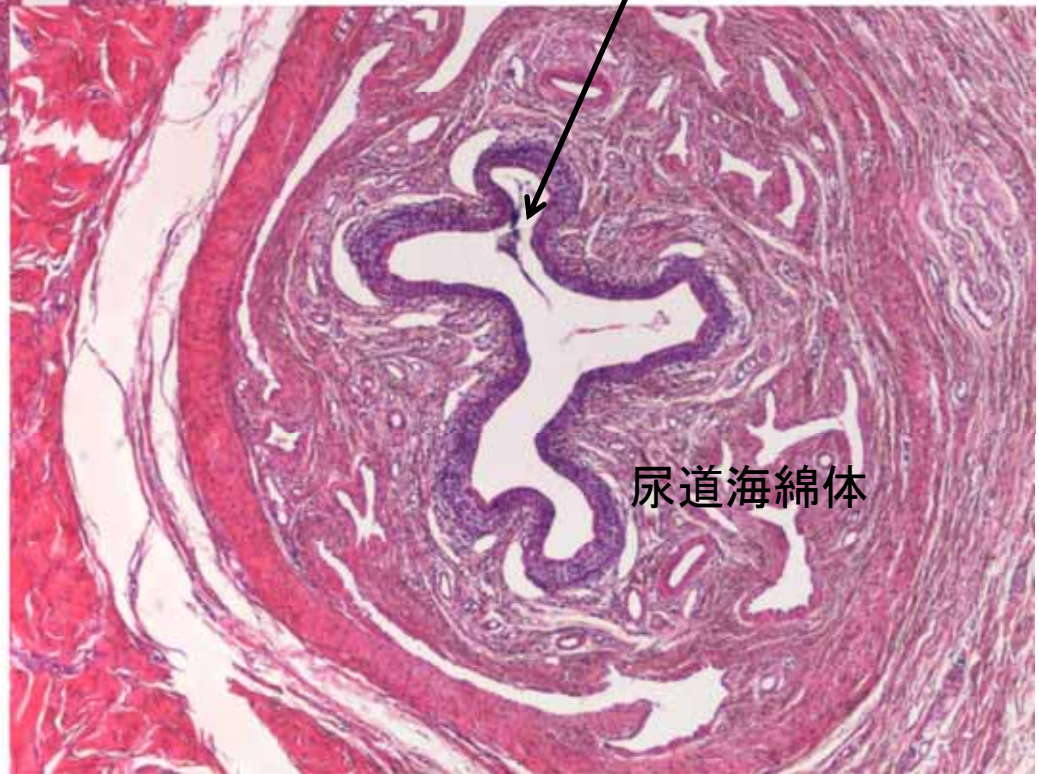


ラセン動脈

陰茎深動脈

海綿体洞

海綿体小柱



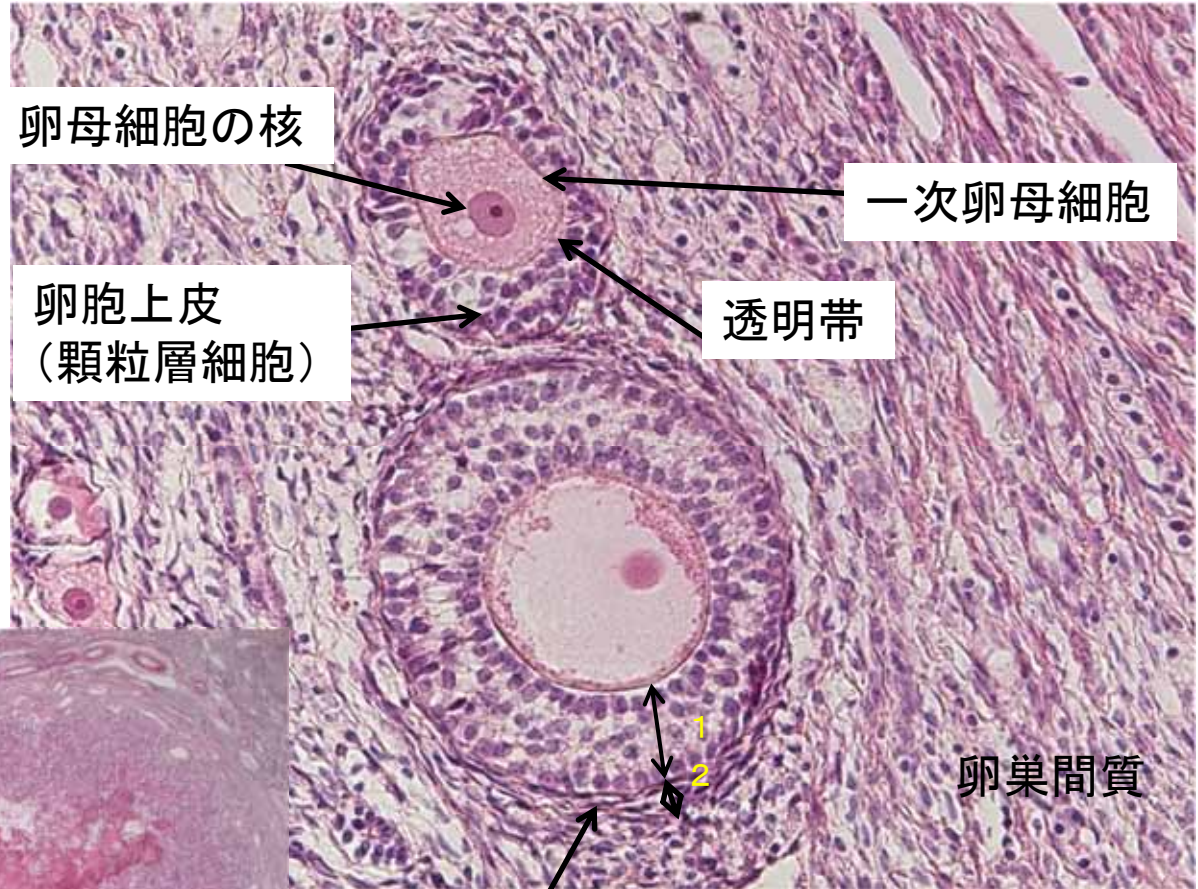
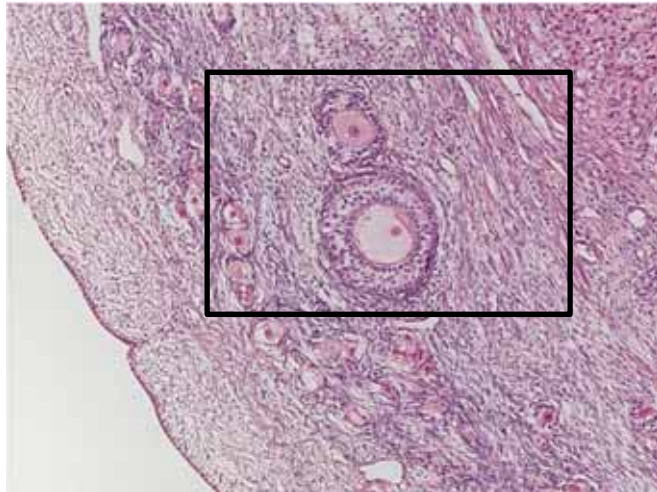
尿道

尿道海綿体

女性生殖器

卵巣 (サル) HE

二次卵胞



卵母細胞の核

一次卵母細胞

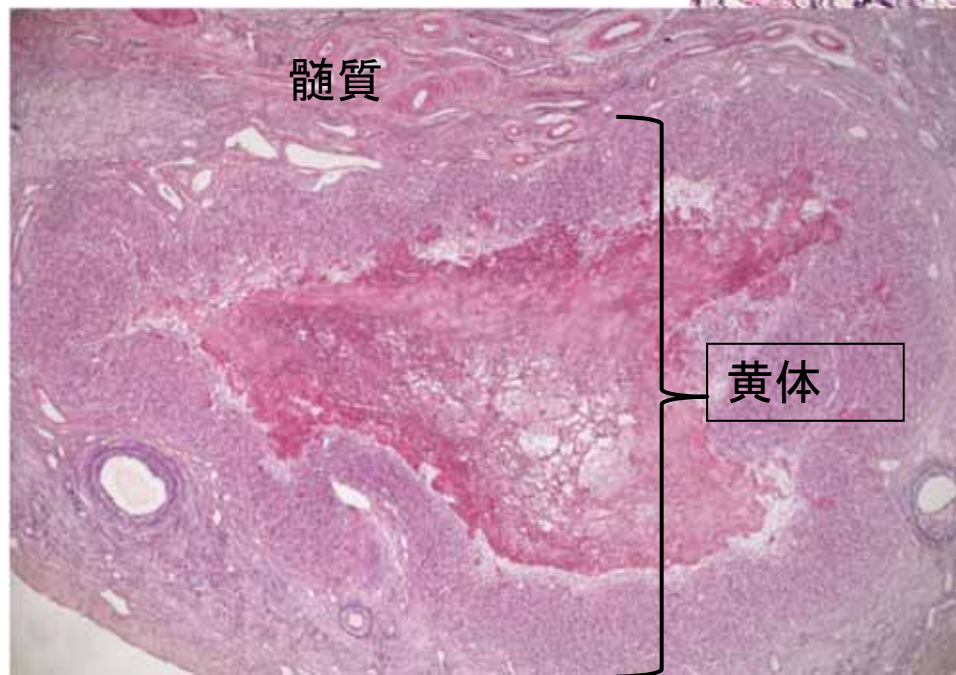
卵胞上皮
(顆粒層細胞)

透明帯

卵巣間質

内卵胞膜細胞

1. 顆粒層細胞
2. 卵胞膜

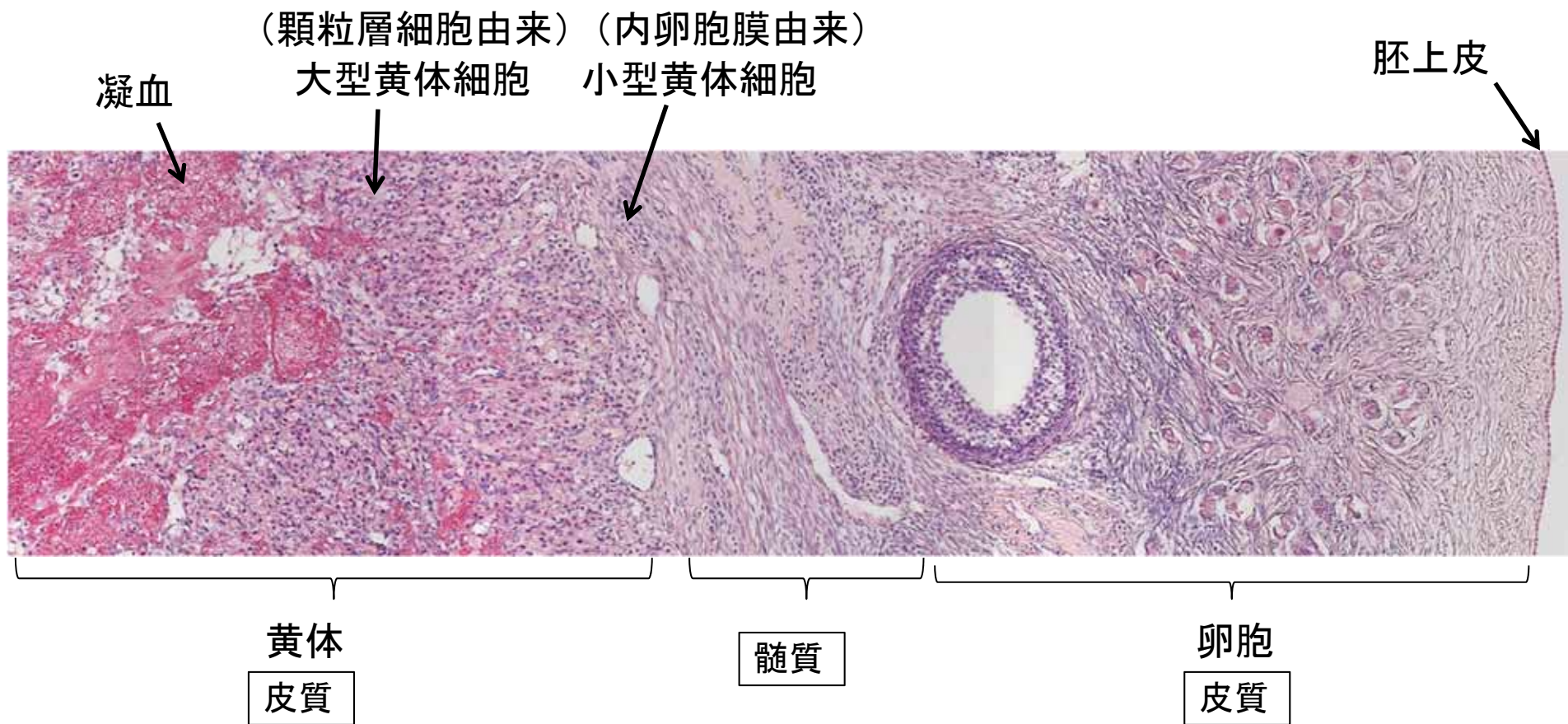


髓質

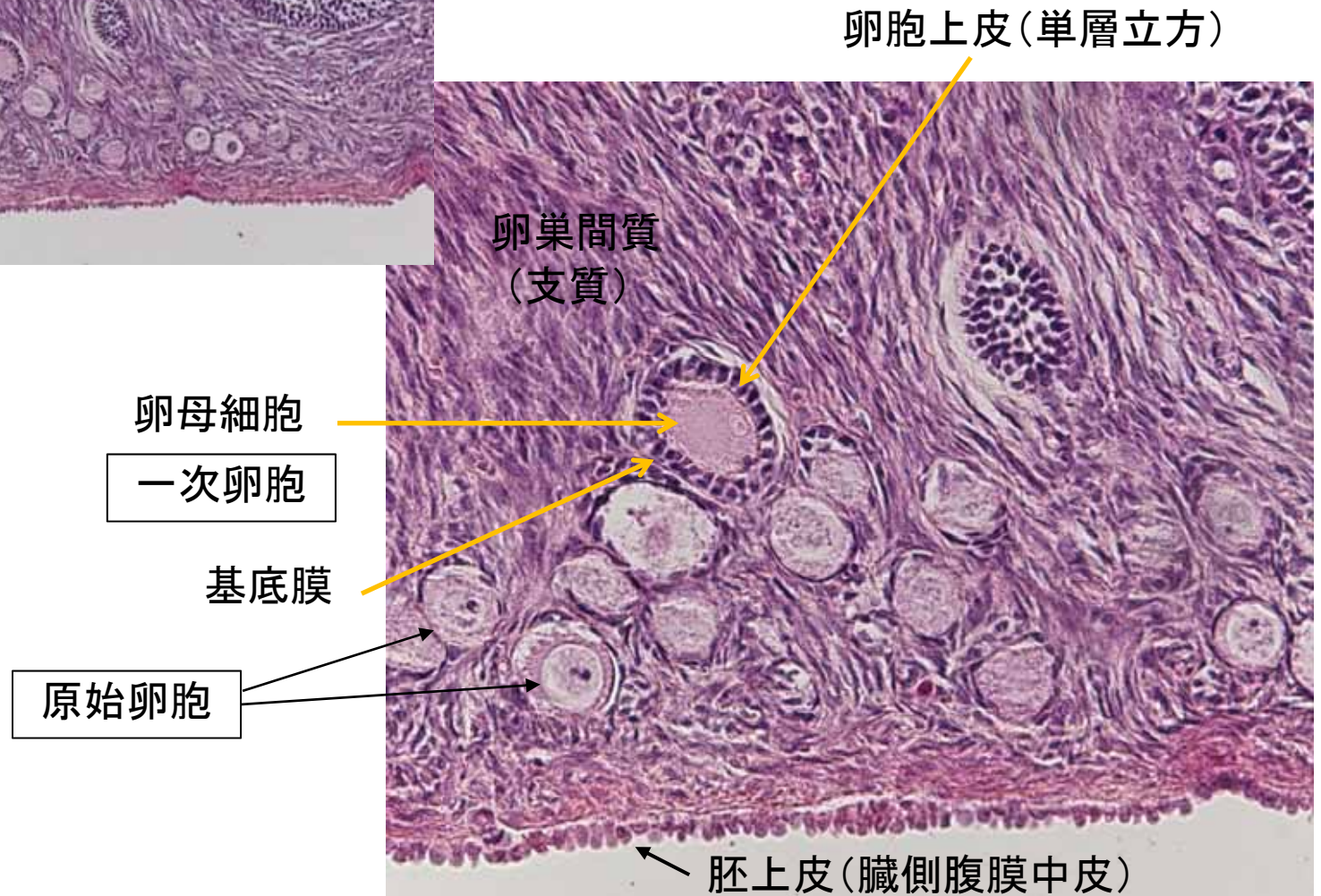
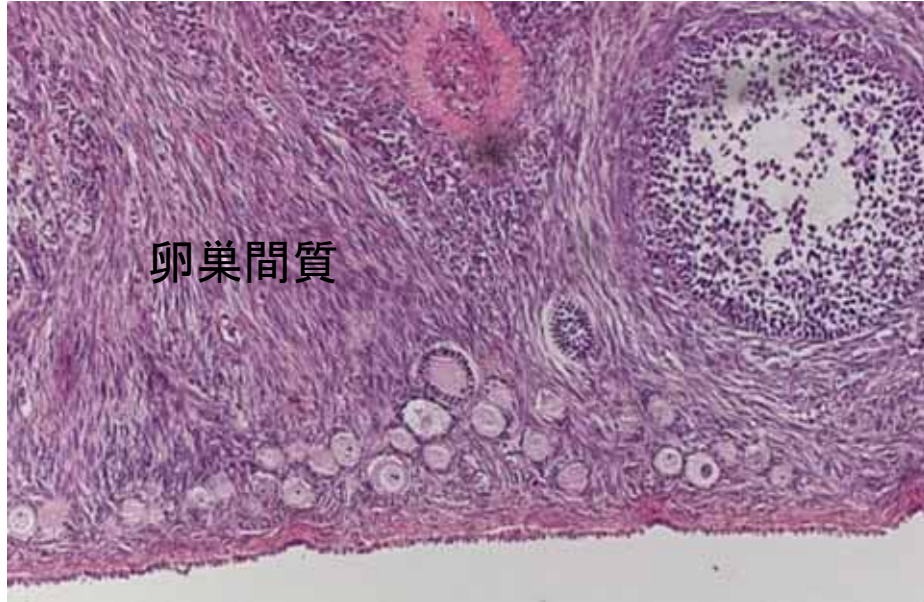
黄体

卵巣 (サル) HE

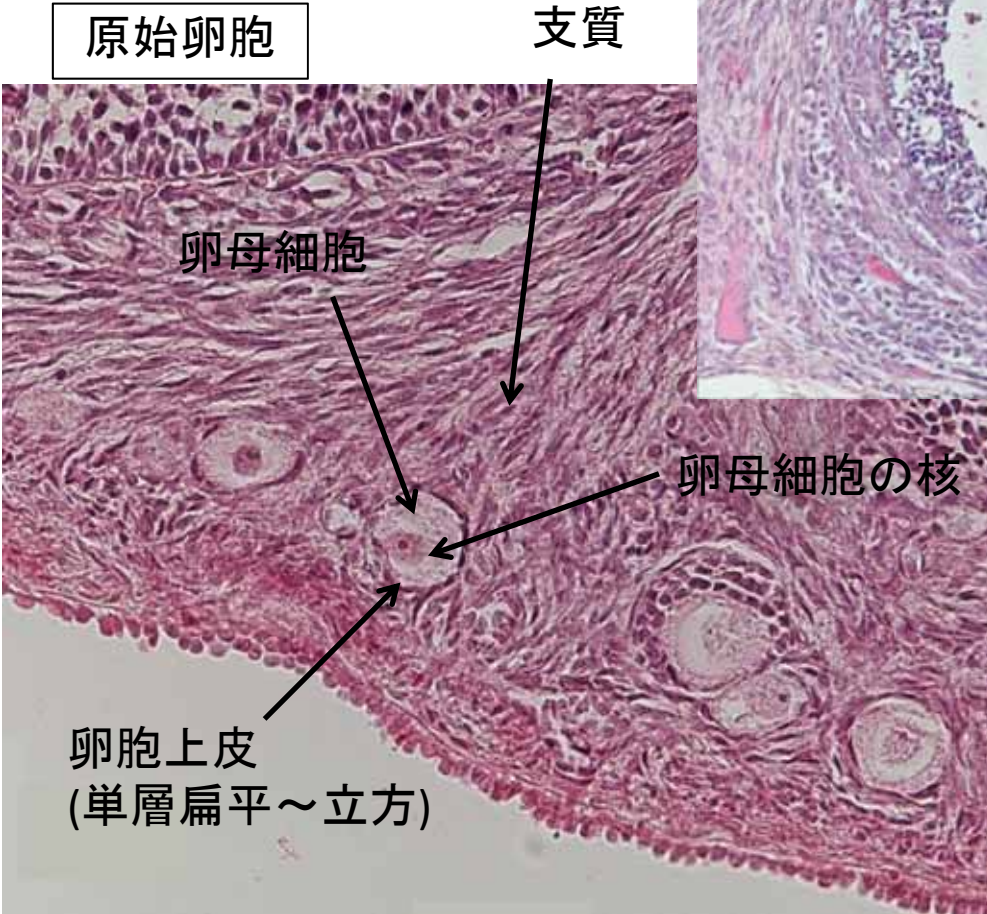
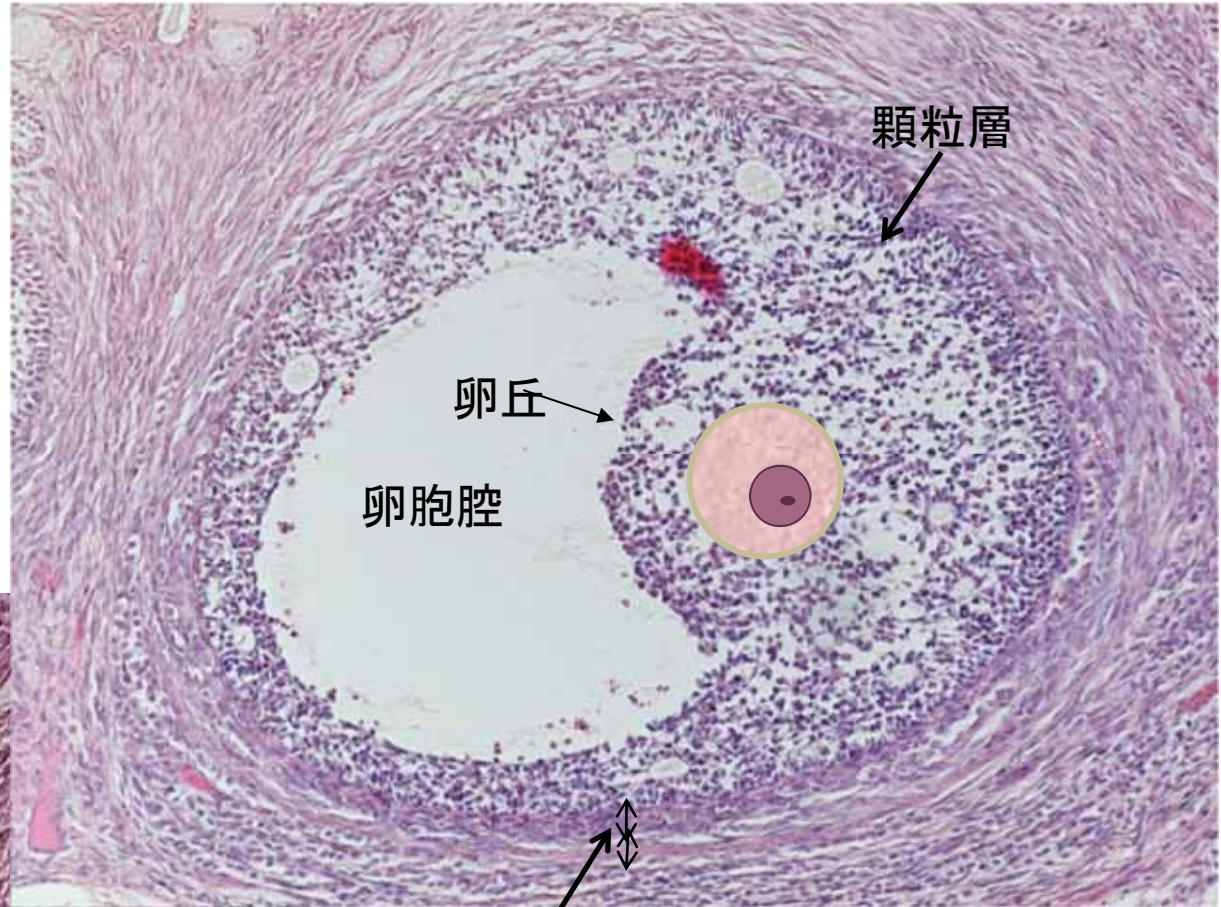
この標本では小型黄体細胞の区別は困難



卵巢 (ウサギ) HE



卵巣(ウサギ) HE



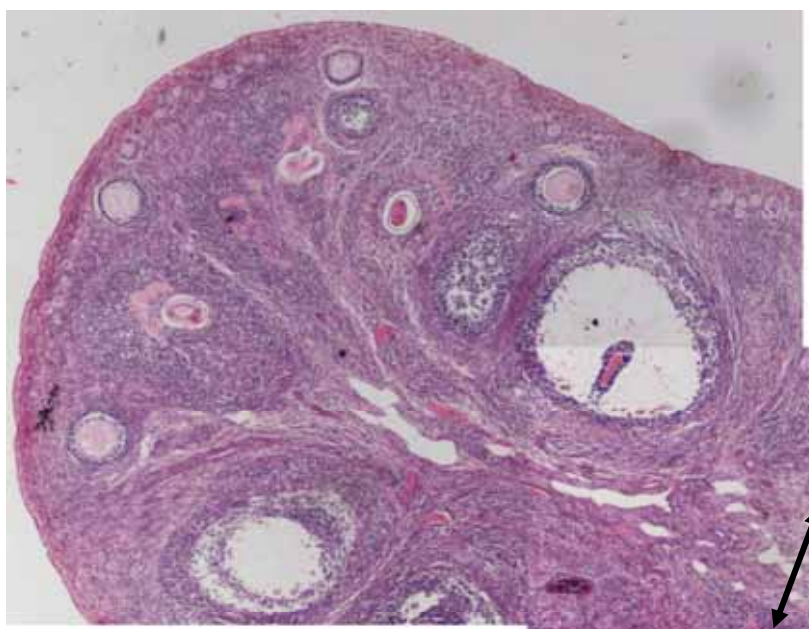
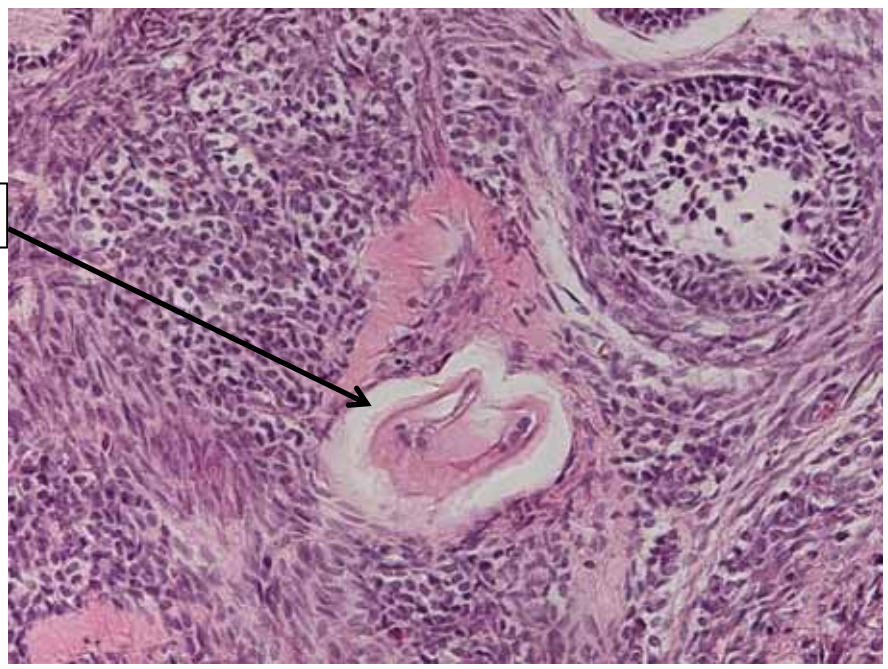
卵胞膜(2層) グラフ卵胞

この図では、卵母細胞・透明帯・放射冠細胞は見られない。
卵母細胞は、イメージです。

きれいなグラフ卵胞はあまりない。

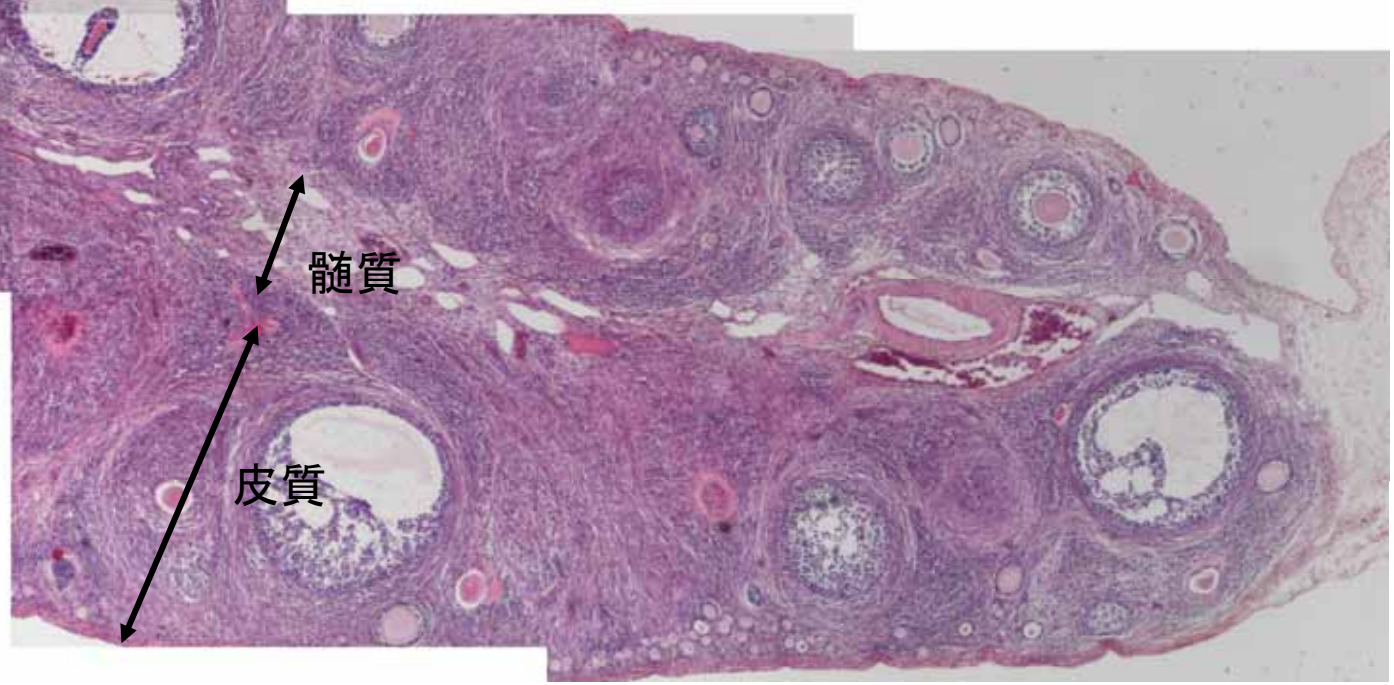
卵巢(ウサギ) HE

閉鎖卵胞

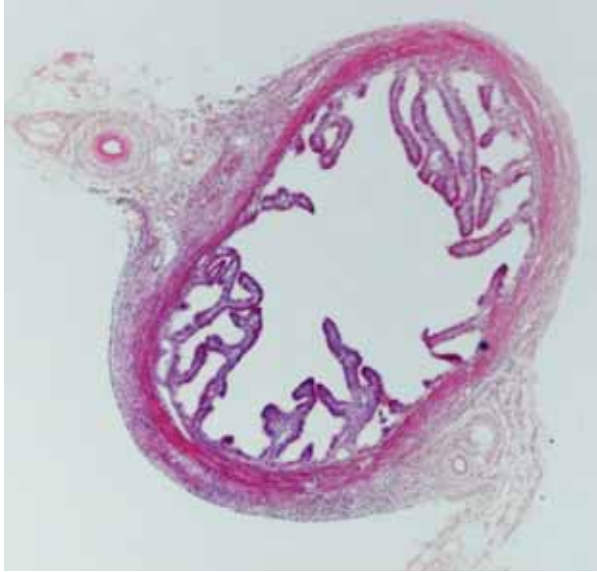


髓質

皮質



卵管 HE



粘膜固有層

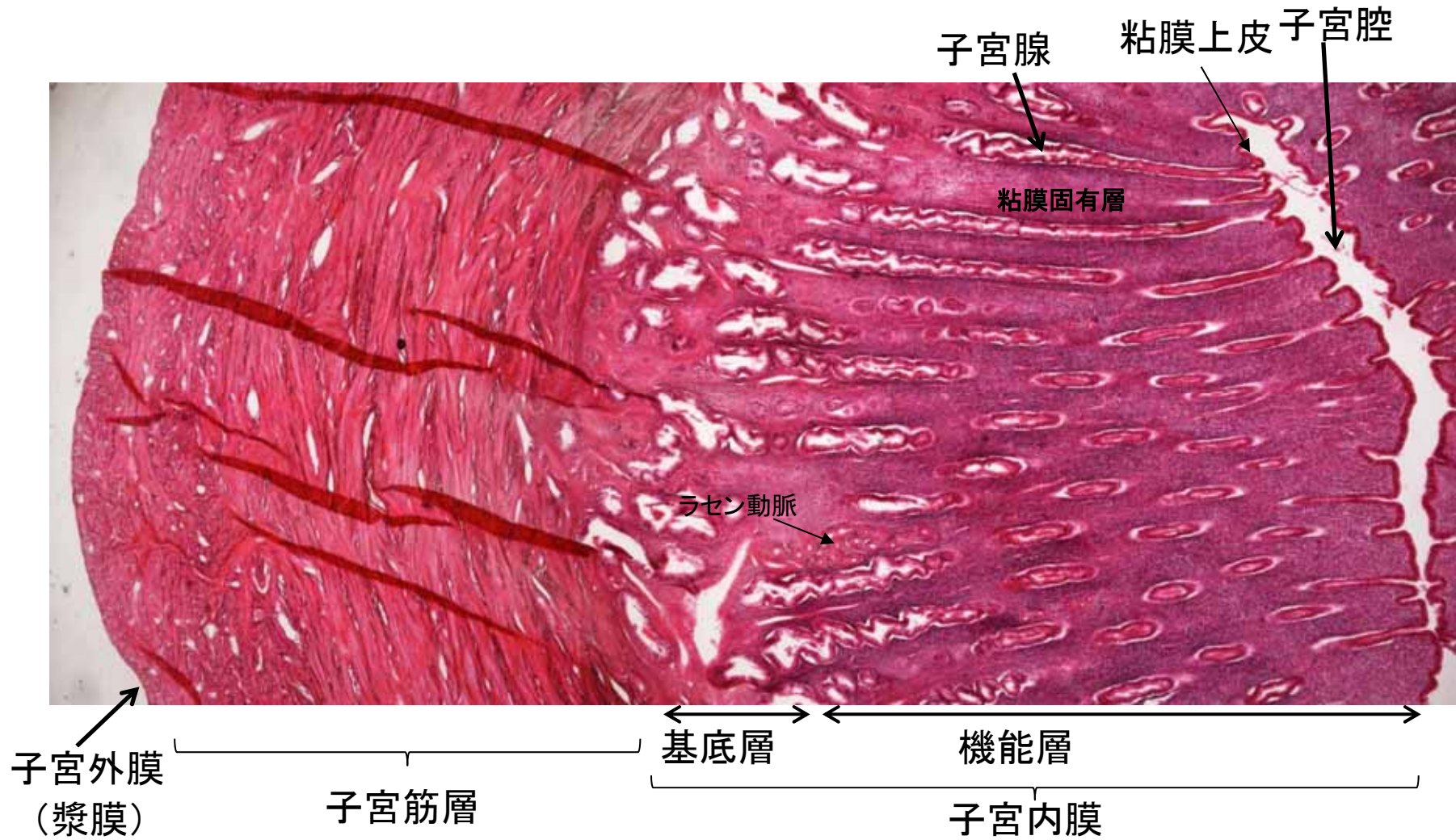


線毛がないところ
→分泌細胞

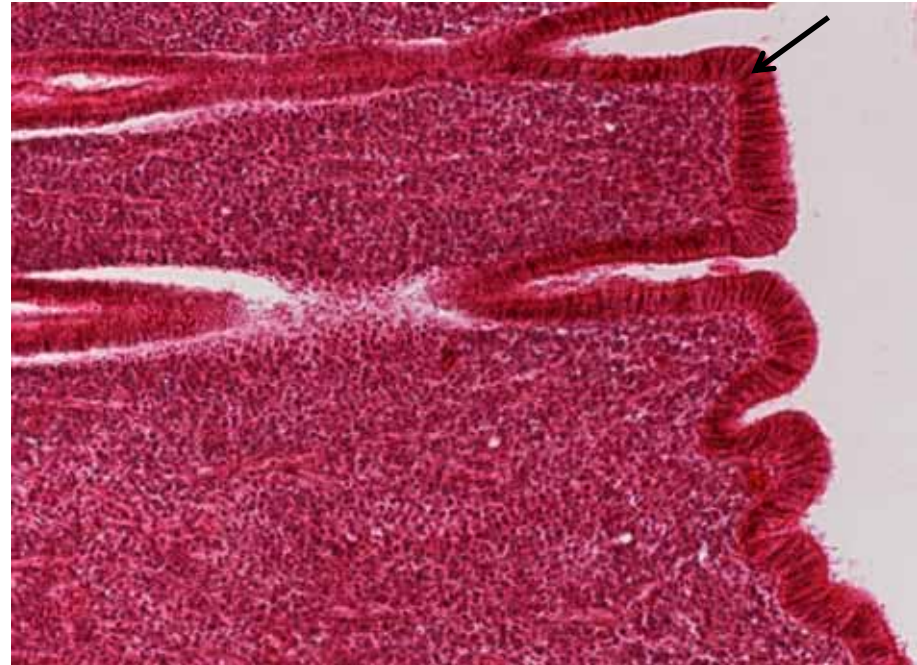
線毛があるところ
→線毛細胞

粘膜上皮 (単層円柱)

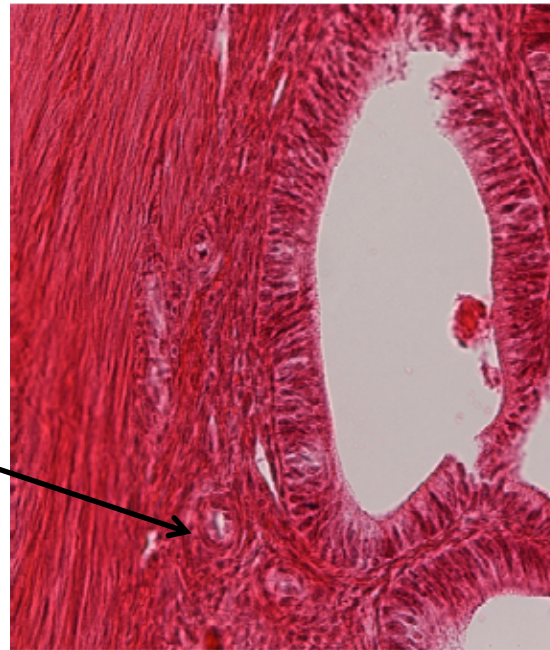
子宮(分泌期)



単層円柱上皮

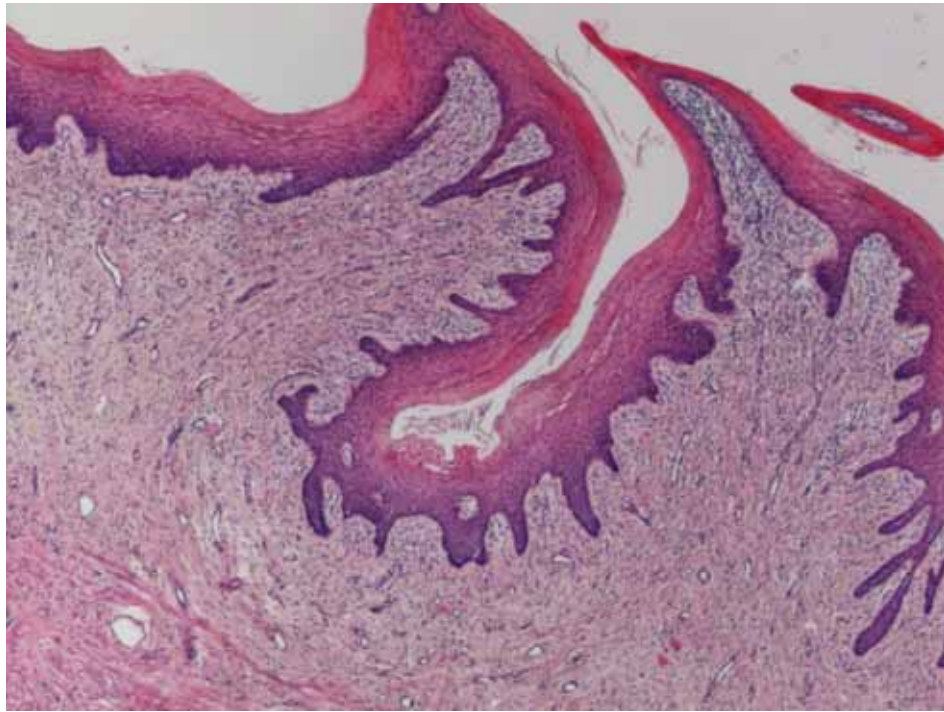


基底動脈？



腔 HE

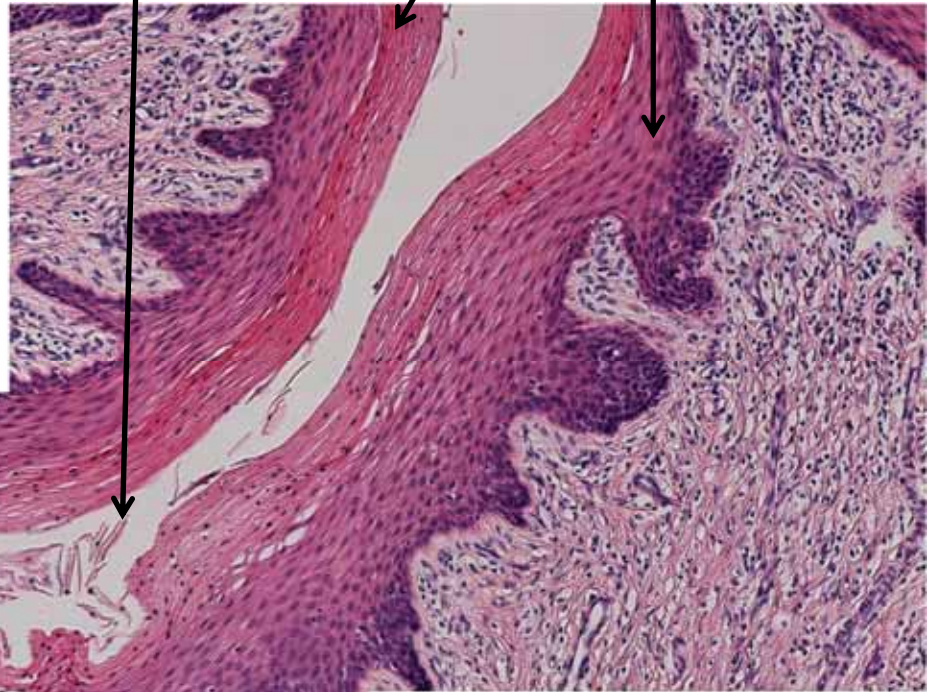




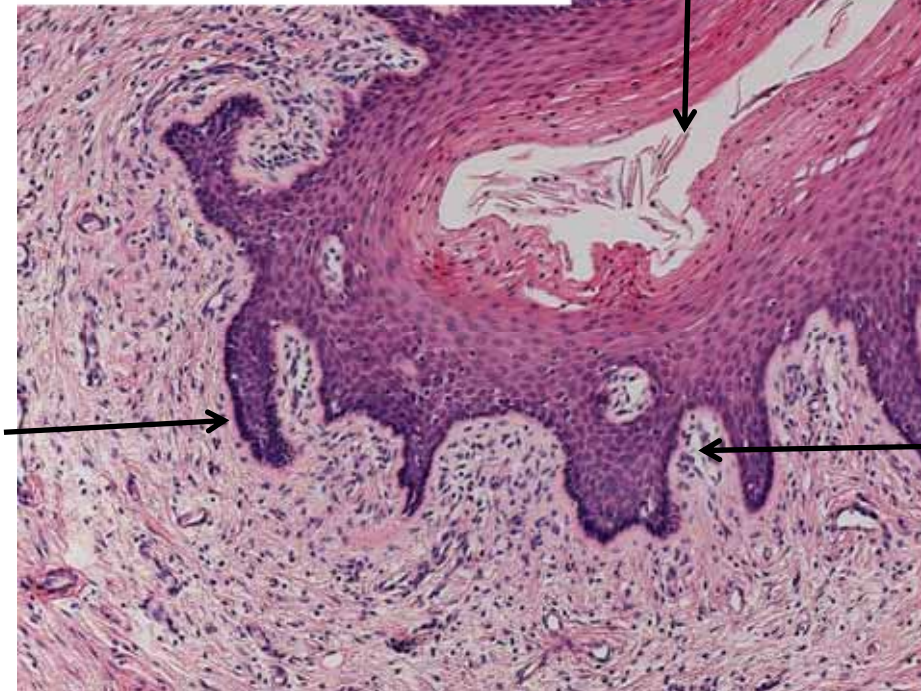
色が違う上皮
→はがれようと
している

はがれた細胞
→Lactate発酵

重層扁平上皮

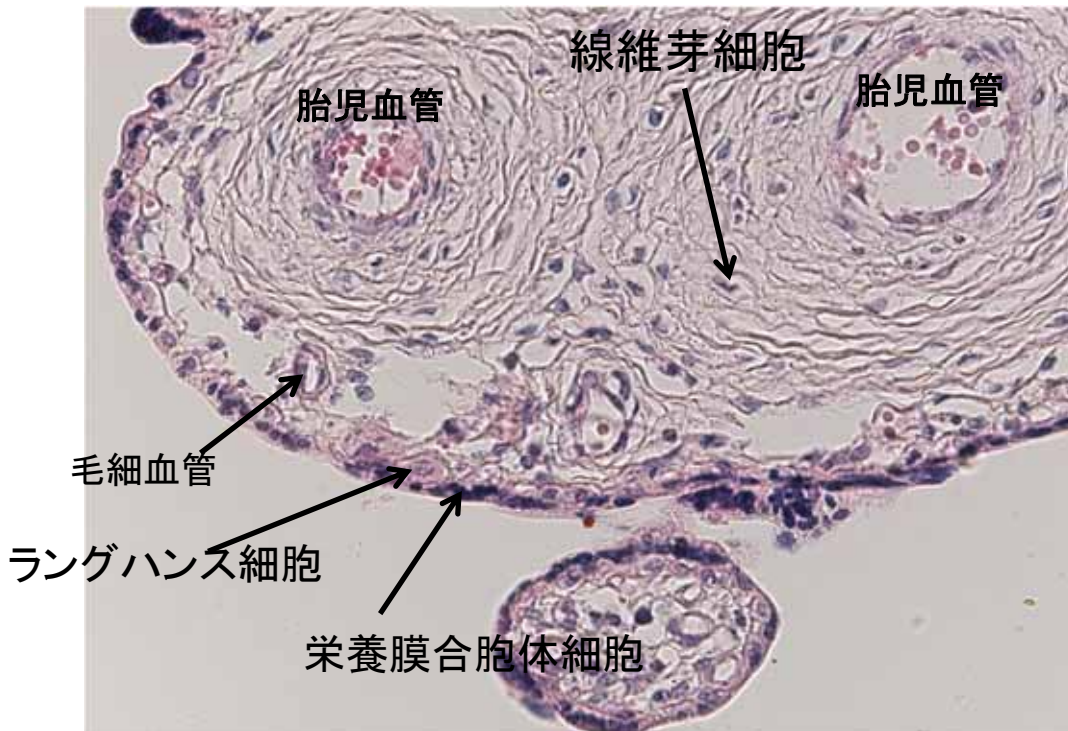
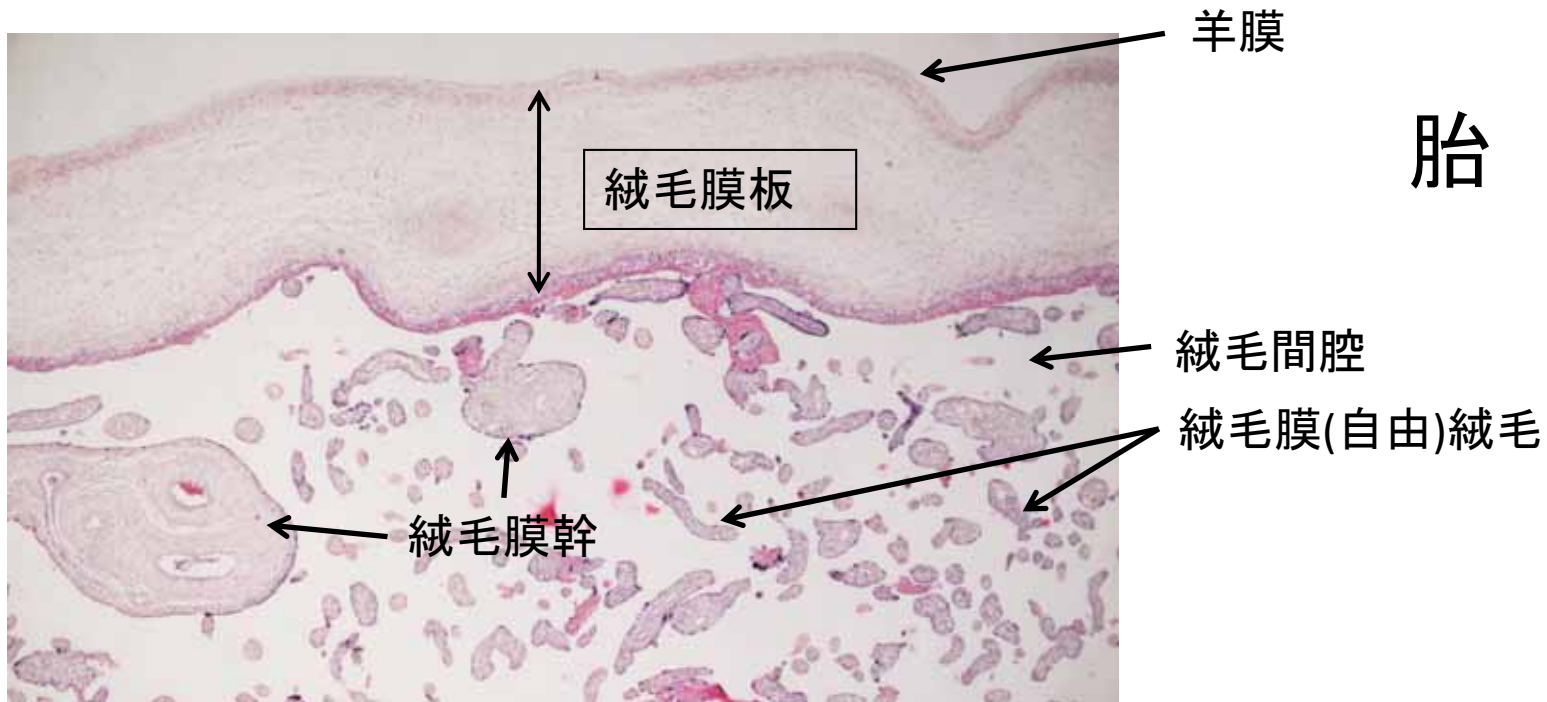


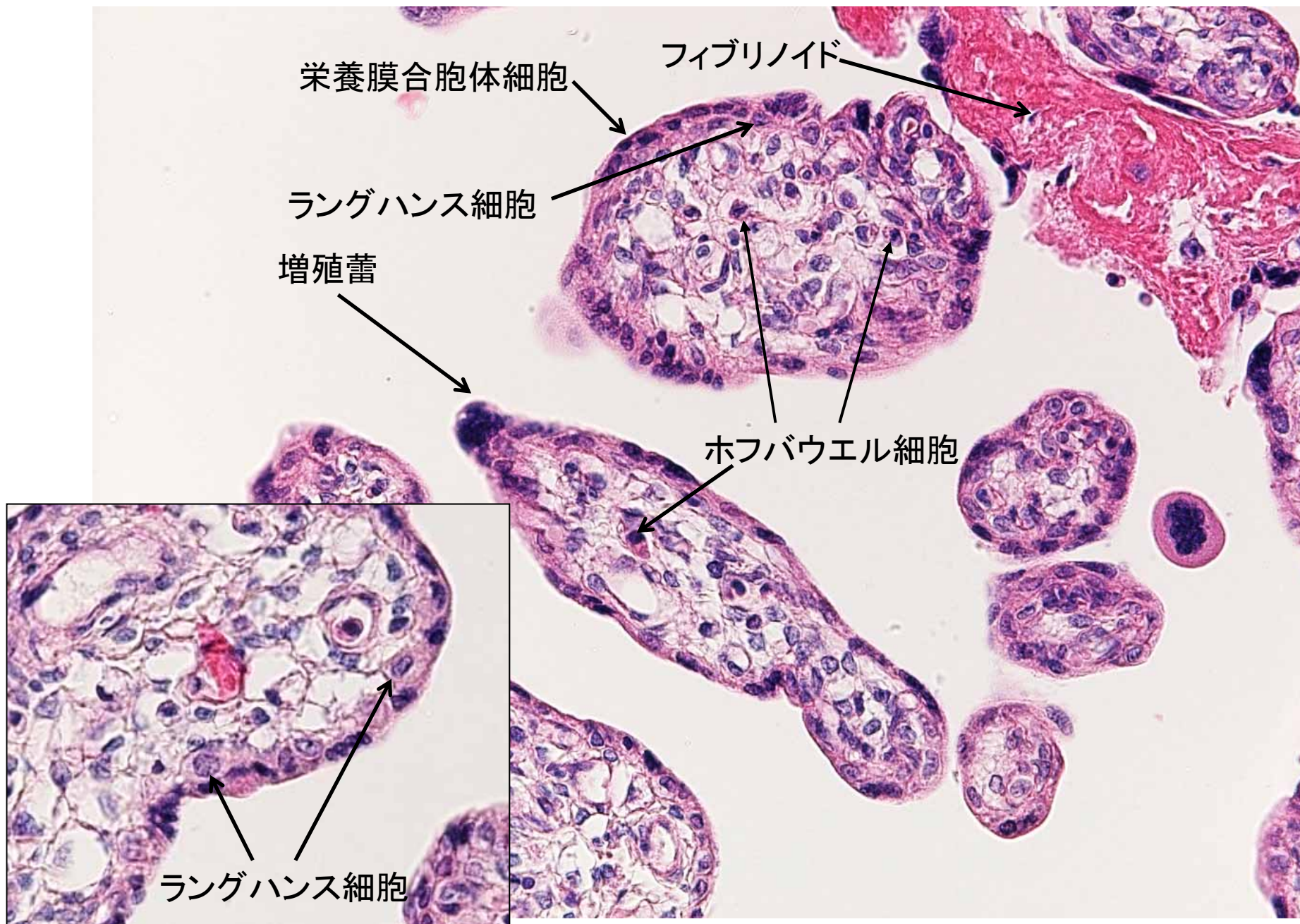
分裂がさかん



結合組織乳頭

胎盤 HE





栄養膜合体細胞

ラングハンス細胞

増殖蕾

脱落膜細胞

脱落膜

